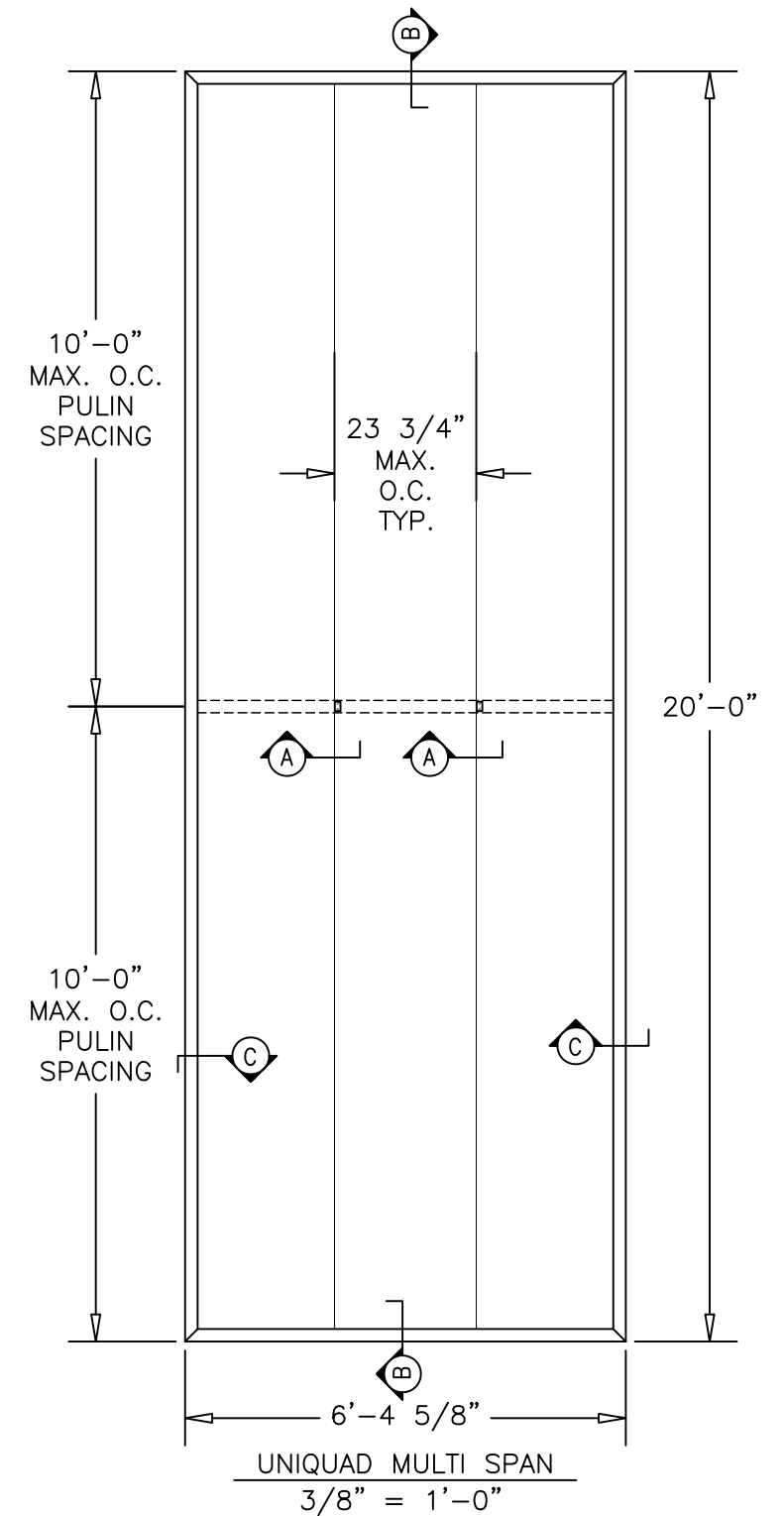
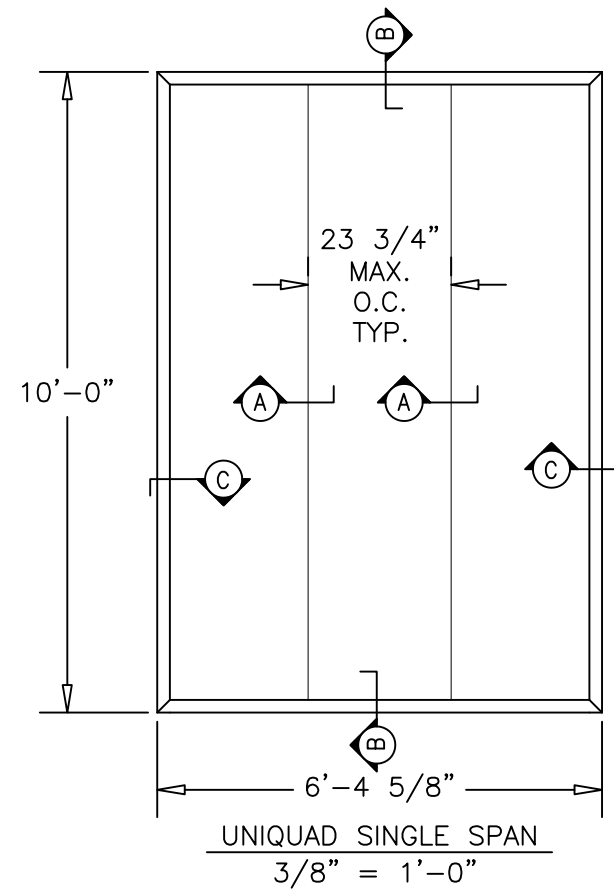
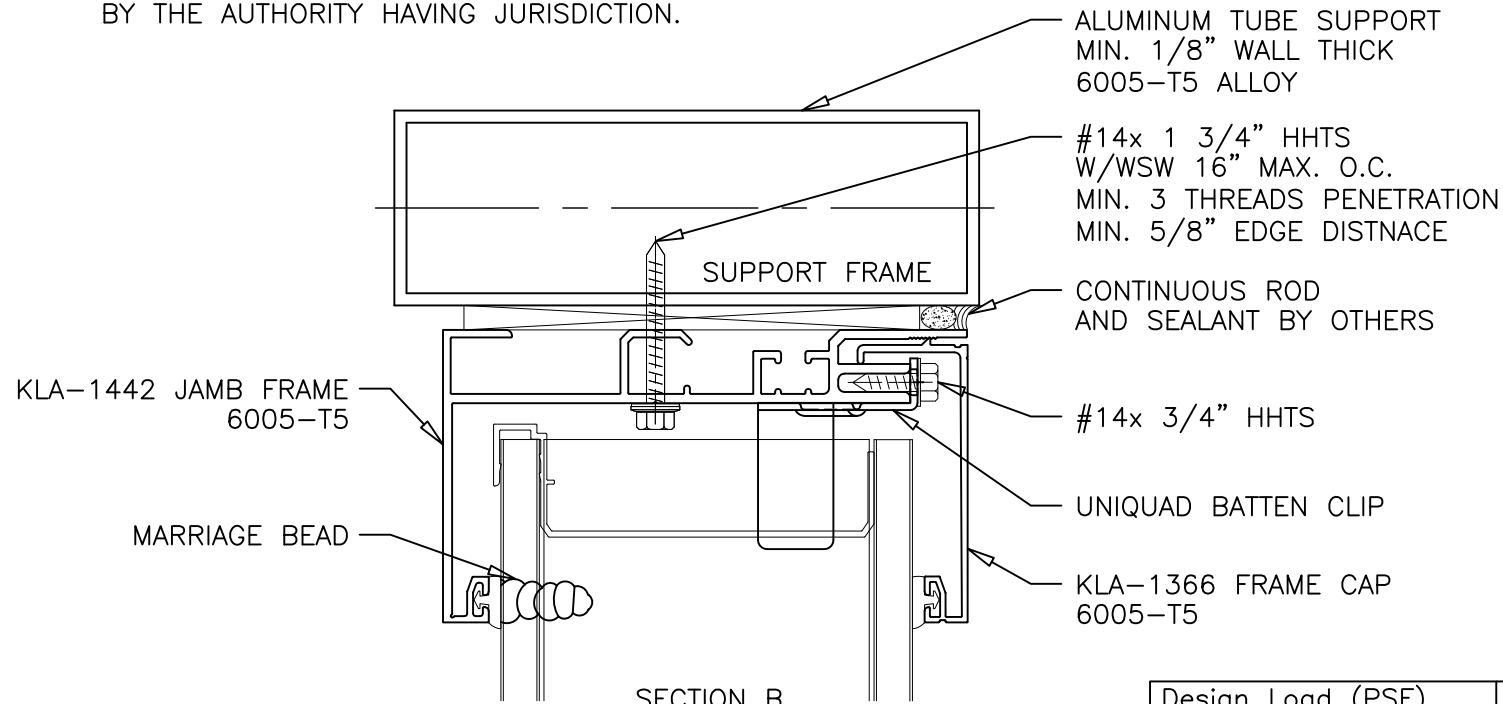
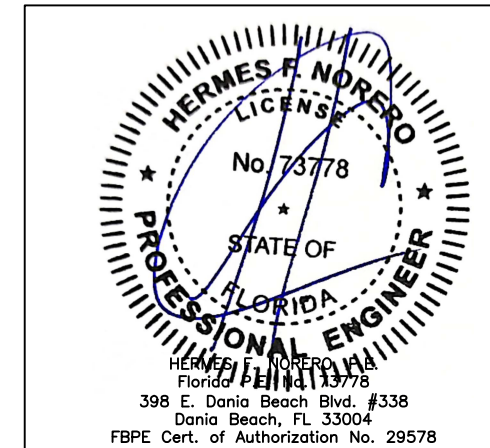
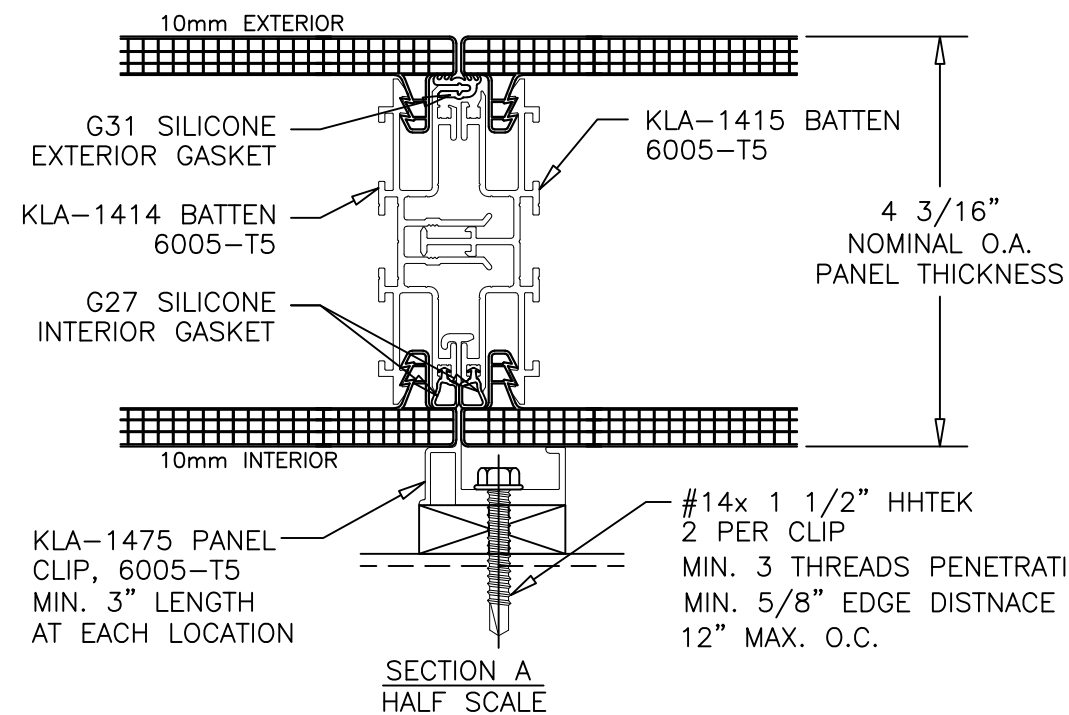
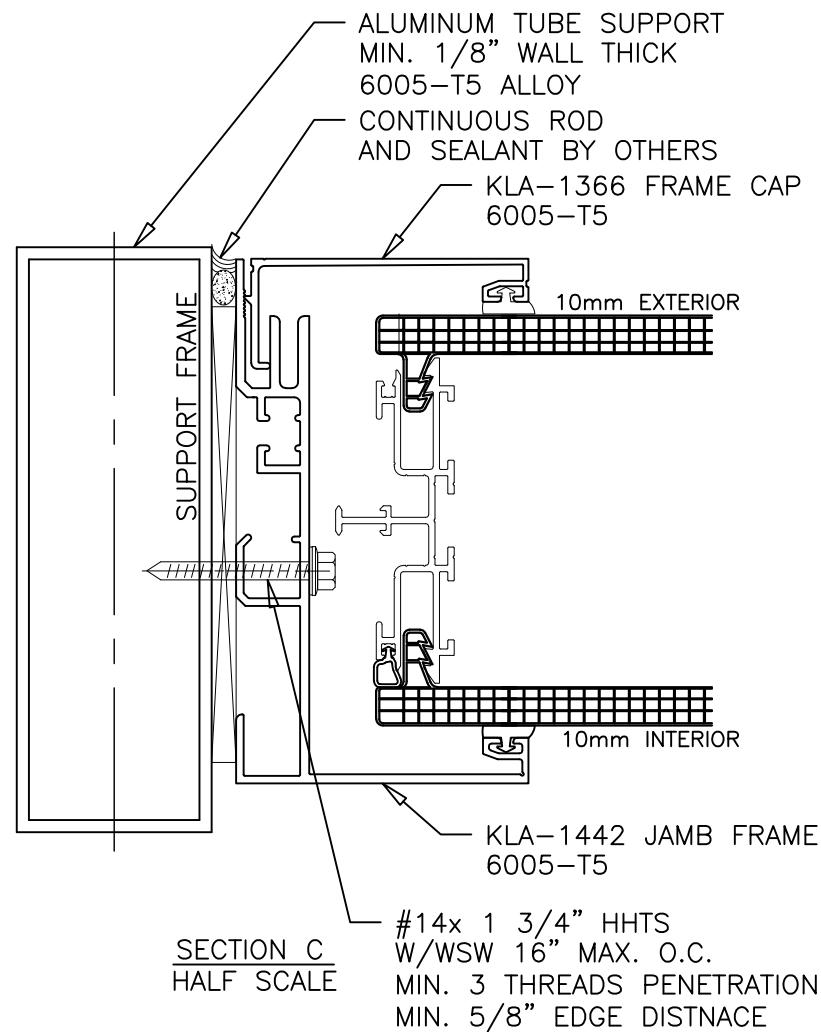


1. MAX. DESIGN PRESSURE APPLIES TO ASSEMBLIES SUCH THAT PURLIN & BATTEN SPACING ARE NOT TO EXCEED AS SHOWN HEREIN.
2. STRUCTURAL ADEQUACY OF SUPPORTING SUBSTRUCTURE IS NOT PART OF THIS APPROVAL AND SHALL BE REVIEWED BY THE AUTHORITY HAVING JURISDICTION.



Design Load (PSF) With 1.5 Safety Factor	Purlin Spacing	Span	Max. Deflection in NONHVHZ for Batten L/120
+/-100 PSF	5'-0"	MULTI	0.50"
+/-55 PSF	7'-6"	MULTI	0.75"
+/-40 PSF	10'-0"	SINGLE	1.00"
+/-40 PSF	10'-0"	MULTI	1.00"



<p>PROJECT: UNIQUAD (NON-HVHZ) (NON-IMPACT) INSTALLATION INSTRUCTION, VERTICAL WALL</p> <p>ARCHITECT: _____ ERECTOR: _____</p>	<p>DATE: _____</p> <p>DESCRIPTION: _____</p> <p>REV.:</p> <p style="text-align: center;">Kingspan Light Air 28862 N. BULLARD DR., LAKE FOREST, IL 60045 (847) 818-1066 • FAX (847) 818-0425</p>
<p>DRAWING NO. KLA008</p> <p>DRAWN BY MS</p> <p>DATE 6/13/23</p> <p>CHECKED BY _____</p> <p>DATE _____</p>	<p>SHEET NO. 1 OF 1</p>